



**Thornbrook, Thornwood.**

**Guide Price £985,000**



**MILLERS**  
ESTATE AGENTS



Introducing this versatile four or five bedroom detached family residence nestled in a tranquil cul-de-sac at the edge of Thornwood village. This exceptional property boasts an expansive driveway, accommodating ample parking, along with a double detached garage and a generously sized garden plot, making it ideal for families and entertaining alike. Situated in a charming private turning with just three distinctive homes, this rare gem is a fantastic opportunity for those seeking a peaceful yet vibrant community.

Step inside to discover a thoughtfully designed interior featuring three generous reception rooms: a spacious lounge perfect for relaxation, a separate dining room ideal for hosting family gatherings and a stylish conservatory that invites the beauty of the outdoors in. The fitted kitchen is complemented by a delightful breakfast area, together with a convenient separate utility room that adds to the functionality of the home. Additionally, a versatile fifth bedroom is available, which can be effortlessly transformed into a large home study, alongside a separate shower room for added convenience.

On the first floor, you will find four generously proportioned bedrooms, a four-piece family bathroom and a master suite featuring its own en-suite shower room and a range of wardrobes. The exterior of this remarkable property showcases a landscaped rear garden that encircles the home, providing a serene retreat that backs onto picturesque arable farmland. With a double detached garage and ample off-street parking, this residence offers both beauty and practicality, making it a perfect family haven.







## GROUND FLOOR

### Kitchen/Breakfast Room

14'1" x 12'6" (4.28m x 3.81m)

### Utility Room

5'5" x 6'4" (1.66m x 1.92m)

### Living Room

13'9" x 17'9" (4.19m x 5.41m)

### Dining Room

11'10" x 11'10" (3.60m x 3.61m)

### Conservatory

12'6" x 11'6" (3.81m x 3.51m)

### Study / Bed Five

9'8" x 9'10" (2.95m x 3.00m)

### Shower Room

5'11" x 7'4" (1.80m x 2.24m)

## FIRST FLOOR

### Bedroom One

13'7" x 14'3" (4.14m x 4.35m)

### En-suite Shower Room

5'11" x 7'4" (1.80m x 2.24m)

### Bedroom Two

9'8" x 16'1" (2.95m x 4.91m)

### Bedroom Three

14'6" x 9'3" (4.43m x 2.83m)

### Bedroom Four

9'0" x 8'10" (2.75m x 2.69m)

### Bathroom

7'10" x 7'11" (2.39m x 2.41m)

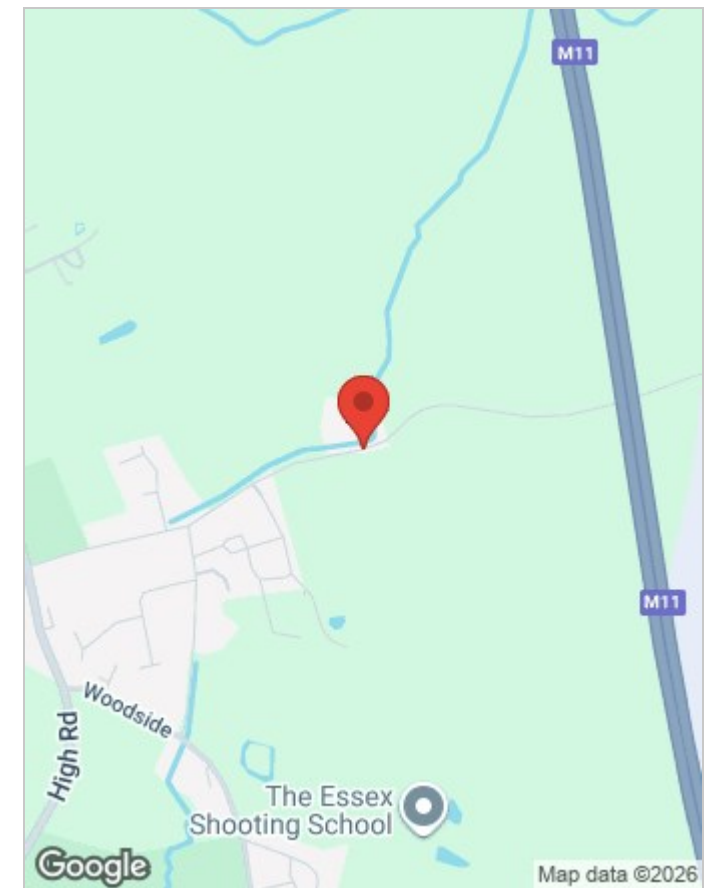
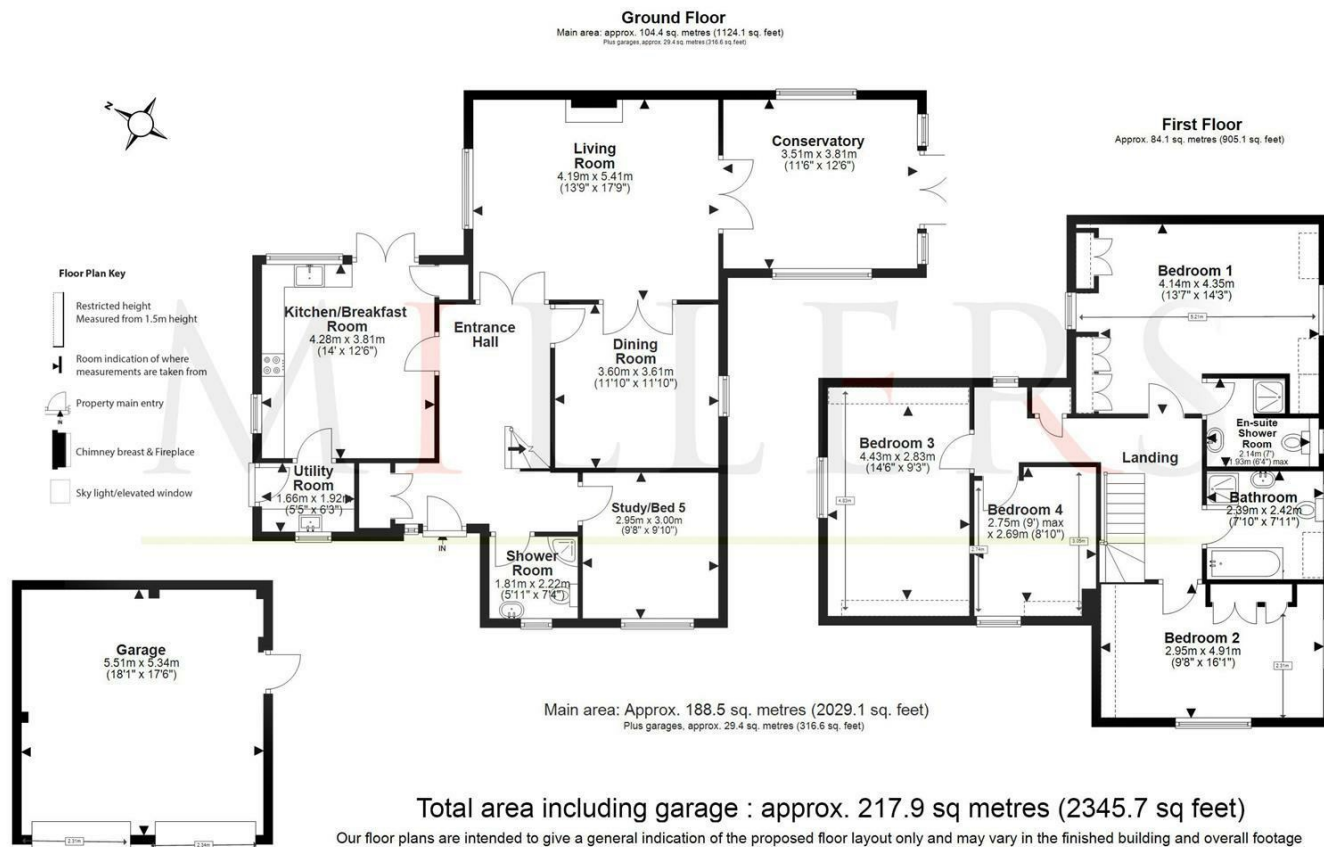
## EXTERNAL AREA

### Garage

18'1" x 17'6" (5.51m x 5.33m)







Energy Efficiency Rating			Environmental Impact (CO <sub>2</sub> ) Rating		
	Current	Potential		Current	Potential
Very energy efficient - lower running costs			Very environmentally friendly - lower CO <sub>2</sub> emissions		
(92 plus) <b>A</b>			(92 plus) <b>A</b>		
(81-91) <b>B</b>			(81-91) <b>B</b>		
(69-80) <b>C</b>			(69-80) <b>C</b>		
(55-68) <b>D</b>			(55-68) <b>D</b>		
(39-54) <b>E</b>			(39-54) <b>E</b>		
(21-38) <b>F</b>			(21-38) <b>F</b>		
(1-20) <b>G</b>			(1-20) <b>G</b>		
Not energy efficient - higher running costs			Not environmentally friendly - higher CO <sub>2</sub> emissions		
<b>England &amp; Wales</b>	EU Directive 2002/91/EC	<b>63</b>	<b>England &amp; Wales</b>	EU Directive 2002/91/EC	<b>77</b>

## Viewing

Please contact our Millers Office on 01992 560555  
if you wish to arrange a viewing appointment for this property or require further information.

These particulars, whilst believed to be accurate are set out as a general outline only for guidance and do not constitute any part of an offer or contract. Intending purchasers should not rely on them as statements of representation of fact, but must satisfy themselves by inspection or otherwise as to their accuracy. No person in this firm's employment has the authority to make or give any representation or warranty in respect of the property.